

JANE RUNCHMAN

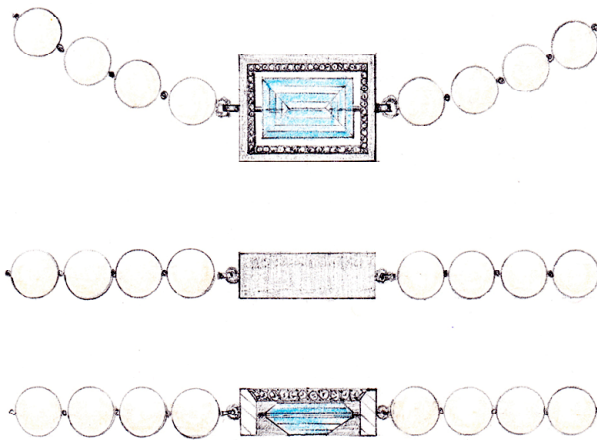
BESPOKE GOLDSMITH

210 Cornwell House
21 Clerkenwell Green
London EC1R 0DX

T: +44 (0)7979 376 112
E: jane@janerunchman.com
W: www.janerunchman.com

The Height of Sophistication

This piece is inspired by St.Leonards Bathing Pool opened in 1933 and designed by “The Concrete King” Sidney Little, Hastings Borough Engineer at the time. Since the building has been demolished and I wanted to capture the atmosphere of the place, I interviewed several people who had known the Bathing Pool in its heyday. The overall feeling was of glamour and sophistication, people flocked in their thousands to see and be seen, to keep fit, use the 10meter high concrete diving boards and play games next to the sea.



An aquamarine baguette is suspended in the centre of an 18ct white gold frame and is reminiscent of the clean water of the former lido. The stone is free to spin around on its axis. Grain set brilliant cut white diamonds line the inside top edge of the frame forming a sparkling amphitheatre around the blue of the aquamarine. The pendant is strung with pearls, a reminder of St.Leonards past prosperity, especially “millionaires row”.